



SERVICE INSTRUCTION

Scoda Aeronáutica Ltda
Estrada Municipal IPN 020 km 0,1
Ipeúna – SP, Brazil.
PHONE: (19) 3576-1292
ZIP CODE: 13537-000
www.scodaeronautica.com.br

SI_SPLS_005
Revision 00

Page 1 de 11

Released Date: January 25th, 2023
Effective Date: January 25th, 2023

SERVICE INSTRUCTION

SI_SPLS_005

LANDING GEAR POSITION ALERT – G3X SYSTEM

Application of Notes, Cautions and Warnings

NOTES, CAUTIONS and **WARNINGS** are used in this document to emphasize instructions and information considered to be unusual or critical. A **NOTE, CAUTIONS** and **WARNINGS** may appear in the text either before or after the instruction(s) to which it applies, depending on the relative significance of the information. The conditions that warrant the use of **NOTES, CAUTIONS** and **WARNINGS** are defined below:

WARNING

IDENTIFIES AN INSTRUCTION, WHICH IF NOT FOLLOWED MAY CAUSE SERIOUS INJURY OR EVEN DEATH

CAUTION

Denotes an instruction which if not followed, may severely damage the aircraft or could lead to suspension of warranty

NOTE

Information useful for better handling



SERVICE INSTRUCTION

Scoda Aeronáutica Ltda
Estrada Municipal IPN 020 km 0,1
Ipeúna – SP, Brazil.
PHONE: (19) 3576-1292
ZIP CODE: 13537-000
www.scodaeronautica.com.br

SI_SPLS_005
Revision 00

Page 2 de 11

Released Date: January 25th, 2023
Effective Date: January 25th, 2023

1. Planning Information

NOTE

SCODA AERONAUTICA cannot accept any responsibility for the quality of work performed. Please refer to the last revision of the Advisory Circular 43.13 – 1B Acceptable Methods, Techniques, and Practices Aircraft Inspection and Repair.

1.1. Affected Aircraft

Type: Super Petrel
Model: LS
Serial Number: All aircraft from serial number S0362, equipped with Garmin G3X System.
Applicable Countries: Not Limited

1.2. Reason

In the course of continuous development and standardization, a Landing Gear Position Alert has been introduced for Super Petrel LS equipped with Garmin G3X System.

1.3. Subject

Landing Gear Position Alert – G3X System.

1.4. Compliance

RECOMMENDED

1.5. Type of Maintenance

N/A

1.6. Personnel Qualifications

For configuration "A": LSA Repairman Maintenance or A&P

For configuration "B": Owner, LSA Repairman Maintenance or A&P

1.7. Release to Service

Conduct of this SI must be logged in the aircraft logbook with date and signature of the responsible person for configuration "A" only.



SERVICE INSTRUCTION

Scoda Aeronáutica Ltda
Estrada Municipal IPN 020 km 0,1
Ipeúna – SP, Brazil.
PHONE: (19) 3576-1292
ZIP CODE: 13537-000
www.scodaeronautica.com.br

SI_SPLS_005
Revision 00

Page 3 de 11

Released Date: January 25th, 2023
Effective Date: January 25th, 2023

1.8. Weight and Balance

N/A

1.9. References

N/A

1.10. Contact Details

For further information on performing this SI, contact us to the following email address:

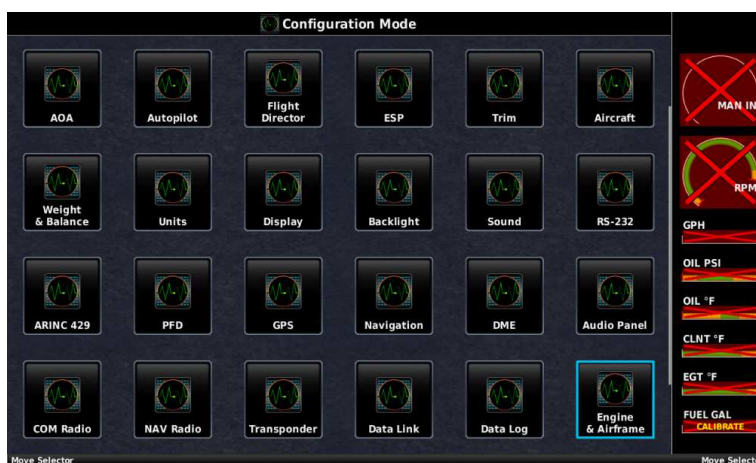
engineering@scodaero.com.br

1.11. Disclaimer

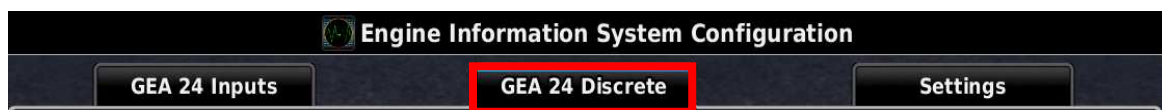
This Service Instruction has been generated with utmost care. Nevertheless, errors and misunderstandings can never be fully excluded. In case of any doubts, the applicant is requested to contact Scoda Aeronáutica Ltda immediately to clarify the issue.

2. Instructions

1. Turn the MASTER on.
2. In configuration mode, use the Touch Panel or a Move Selector Knob to select Engine and Airframe.

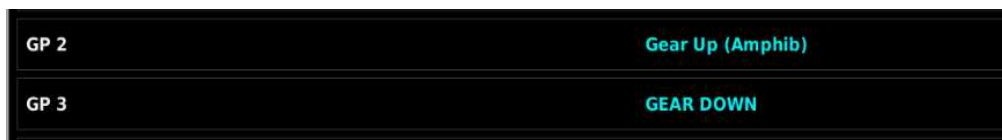


3. Use the Touch Panel or a Move Selector Knob to select the tab GEA 24 Discrete.



4. Check the Gear Up (Amphib) and Gear Down configuration:

- **Configuration A:** If the configuration is located in position named “GP”, the wiring harness in the GEA 24 connector should be changed. Proceed to the step 5.



- **Configuration B:** If the configuration is located in position named “Discrete”, no change should be made. Proceed to the step 18.

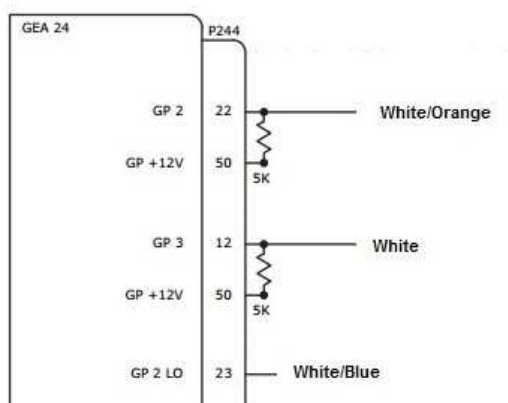


5. Turn the MASTER off.
6. Change the wiring connection of the 50 pins connector located in the lower left corner of the GEA 24 connector. The GEA 24 connector is located behind the instrument panel. See below instructions for changing the pins:

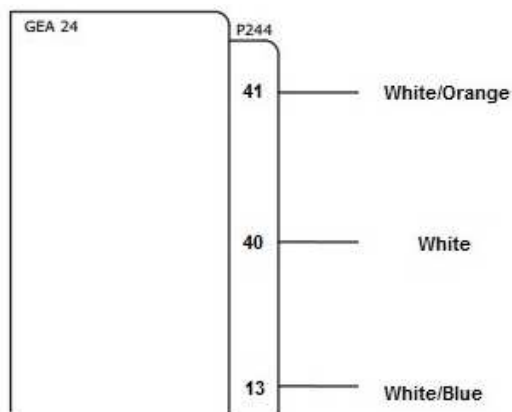
CAUTION

This step should be performed by a LSA Repairman Maintenance or A&P.

- Remove the wires located in the pins 12, 22 and 23 (see scheme below). Remove the resistors too.



- Reinstall the wires in the pins 13, 40 and 41 according to the scheme below. No resistors are necessary.





SERVICE INSTRUCTION

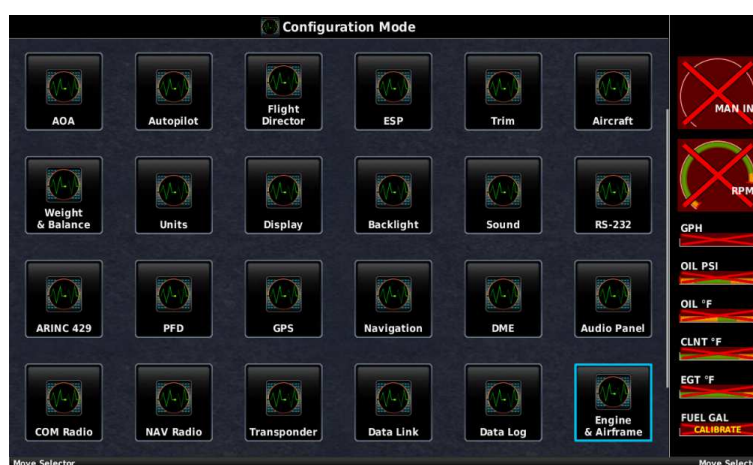
Scoda Aeronáutica Ltda
Estrada Municipal IPN 020 km 0,1
Ipeúna – SP, Brazil.
PHONE: (19) 3576-1292
ZIP CODE: 13537-000
www.scodaeronautica.com.br

SI_SPLS_005
Revision 00

Page 6 de 11

Released Date: January 25th, 2023
Effective Date: January 25th, 2023

7. Connect the 50 pins connector in the GEA 24 module.
8. Turn the MASTER on.
9. In configuration mode, use the Touch Panel or a Move Selector Knob to select Engine and Airframe.



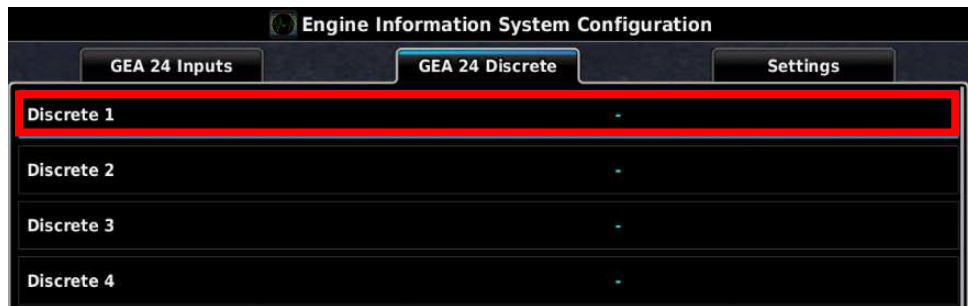
10. Use the Touch Panel or a Move Selector Knob to Select GP.



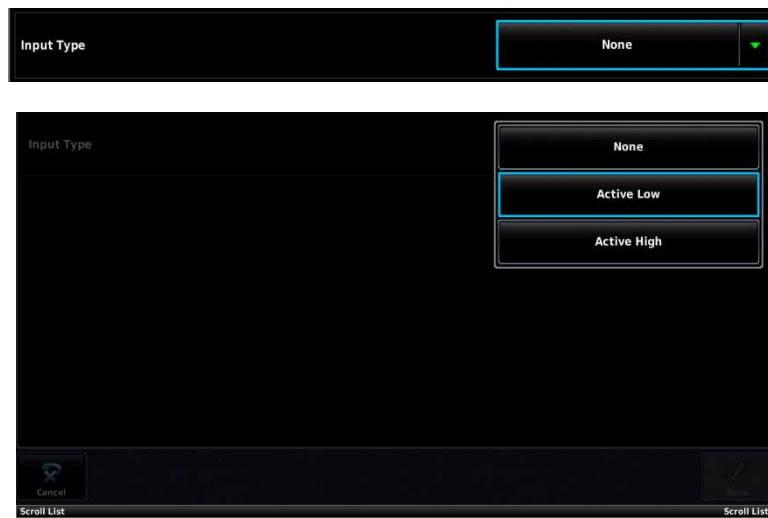
11. Use the Touch Panel or a Move Selector Knob to select “GP” and set as “None”. Make this step for both “GP”.



12. Use the Touch Panel or a Move Selector Knob to select Discrete 1.



13. Use the Touch Panel or a Move Selector Knob to select Input Type and set as "Active Low".





SERVICE INSTRUCTION

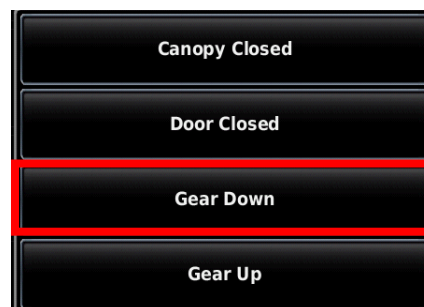
Scoda Aeronáutica Ltda
Estrada Municipal IPN 020 km 0,1
Ipeúna – SP, Brazil.
PHONE: (19) 3576-1292
ZIP CODE: 13537-000
www.scodaeronautica.com.br

SI_SPLS_005
Revision 00

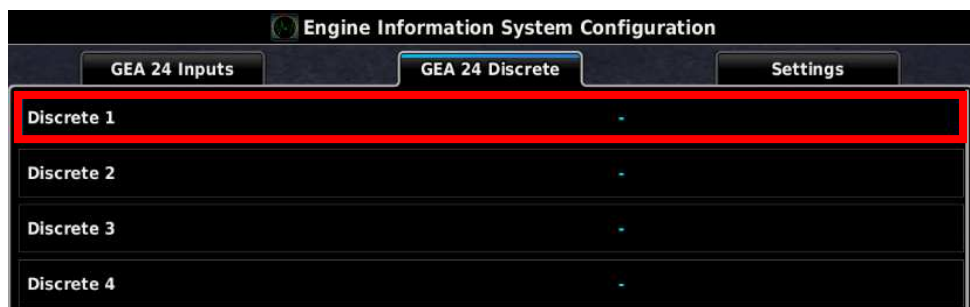
Page 8 de 11

Released Date: January 25th, 2023
Effective Date: January 25th, 2023

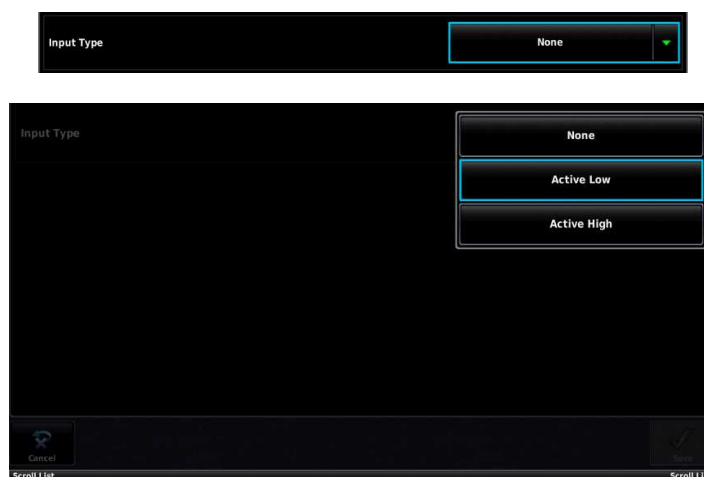
14. Use the Touch Panel or a Move Selector Knob to select Input Function, set as “Gear Down” and save.



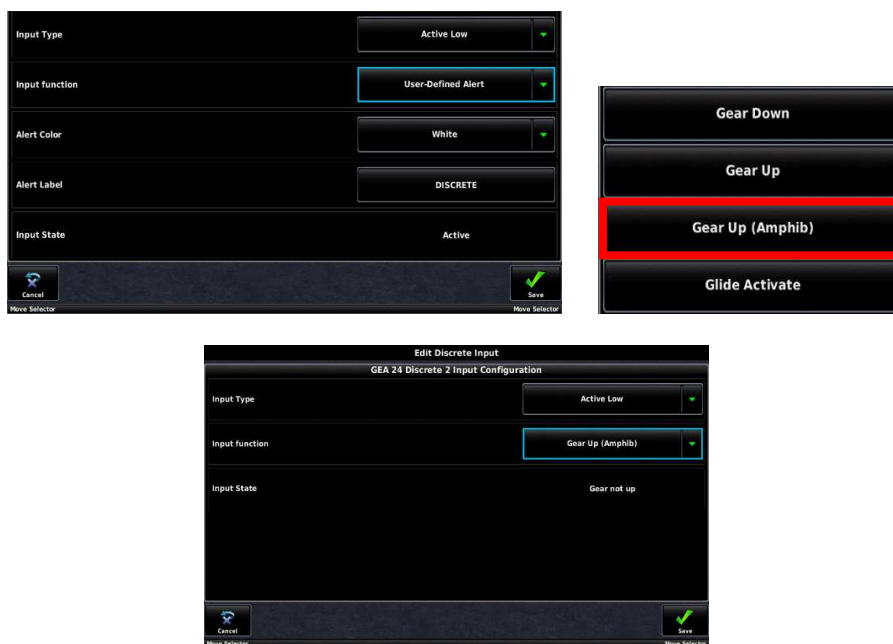
15. Use the Touch Panel or a Move Selector Knob to select Discrete 2.



16. Use the Touch Panel or a Move Selector Knob to select Input Type and set as “Active Low”.



17. Use the Touch Panel or a Move Selector Knob to select Input Function, set as “Gear Up (Amphib)”, and save.

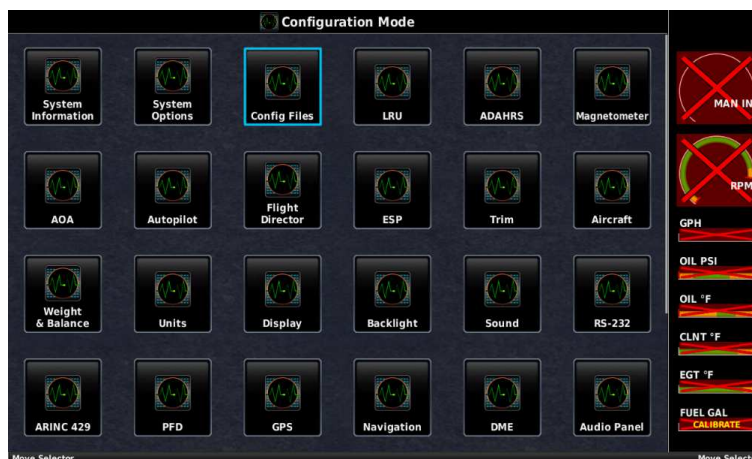


18. On a SD card, create a folder named “Garmin” and inside this folder create a “config” folder.

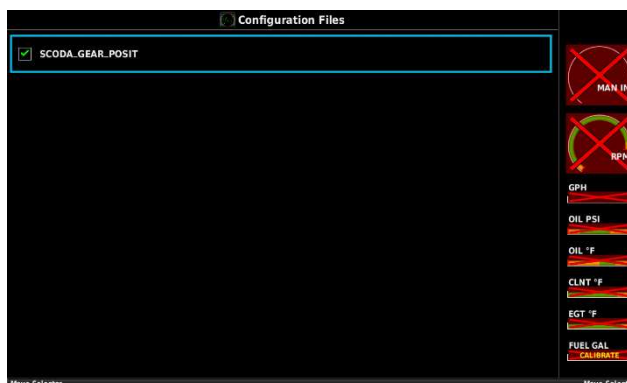
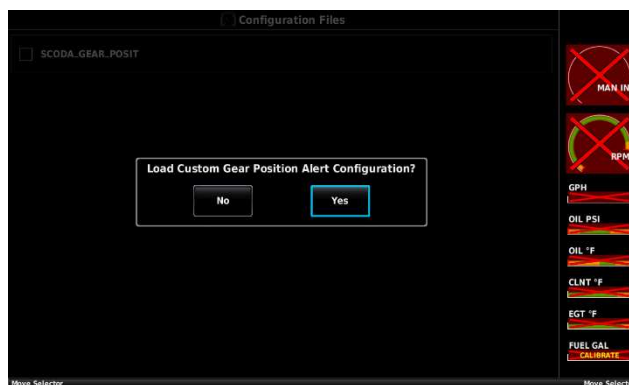
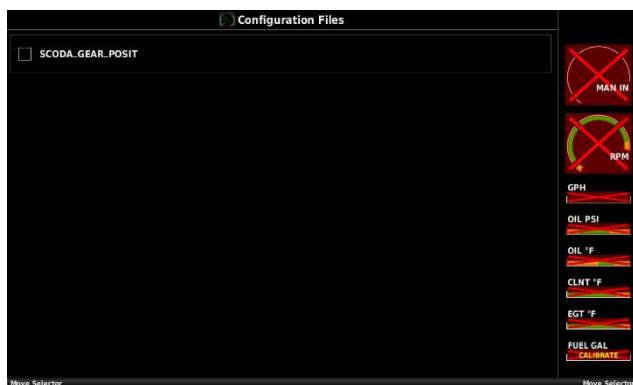
19. Place the file “SCODA_GEAR_POSIT_ALERTS.gca” inside the “config” folder.

20. Insert the SD Card in the main display.

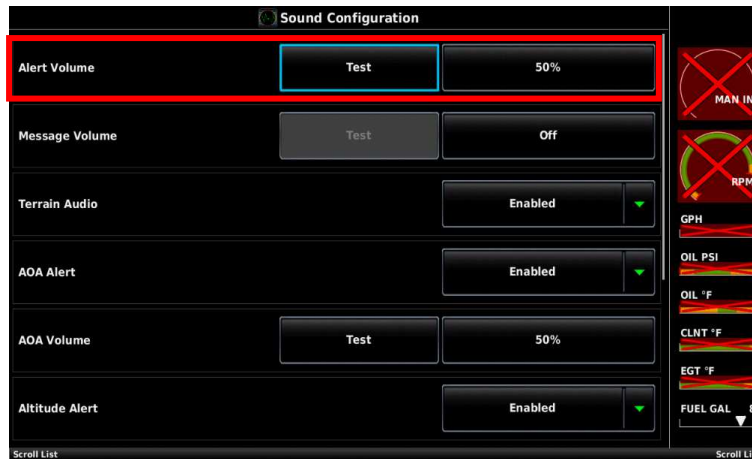
21. In configuration mode, use the Touch Panel or a Move Selector Knob to select Config Files Page.



22. Use the Touch Panel or a Move Selector Knob to select “SCODA GEAR POSIT” and select “YES” in Load Custom Gear Position Alert Configuration.



23. Use the Touch Panel or a Move Selector Knob to select Sound and set the Alert Volume to 100%.

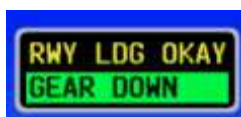


24. Use the Touch Panel or a Move Selector Knob to select Save & Reboot.



The system will work from the following conditions:

- Airspeed below 70 kts; AGL less than 500 feet
- GEAR DOWN = female voice “runway landing okay”
- GEAR UP = female voice “water landing okay”
- In the screen will be displayed:



OR

