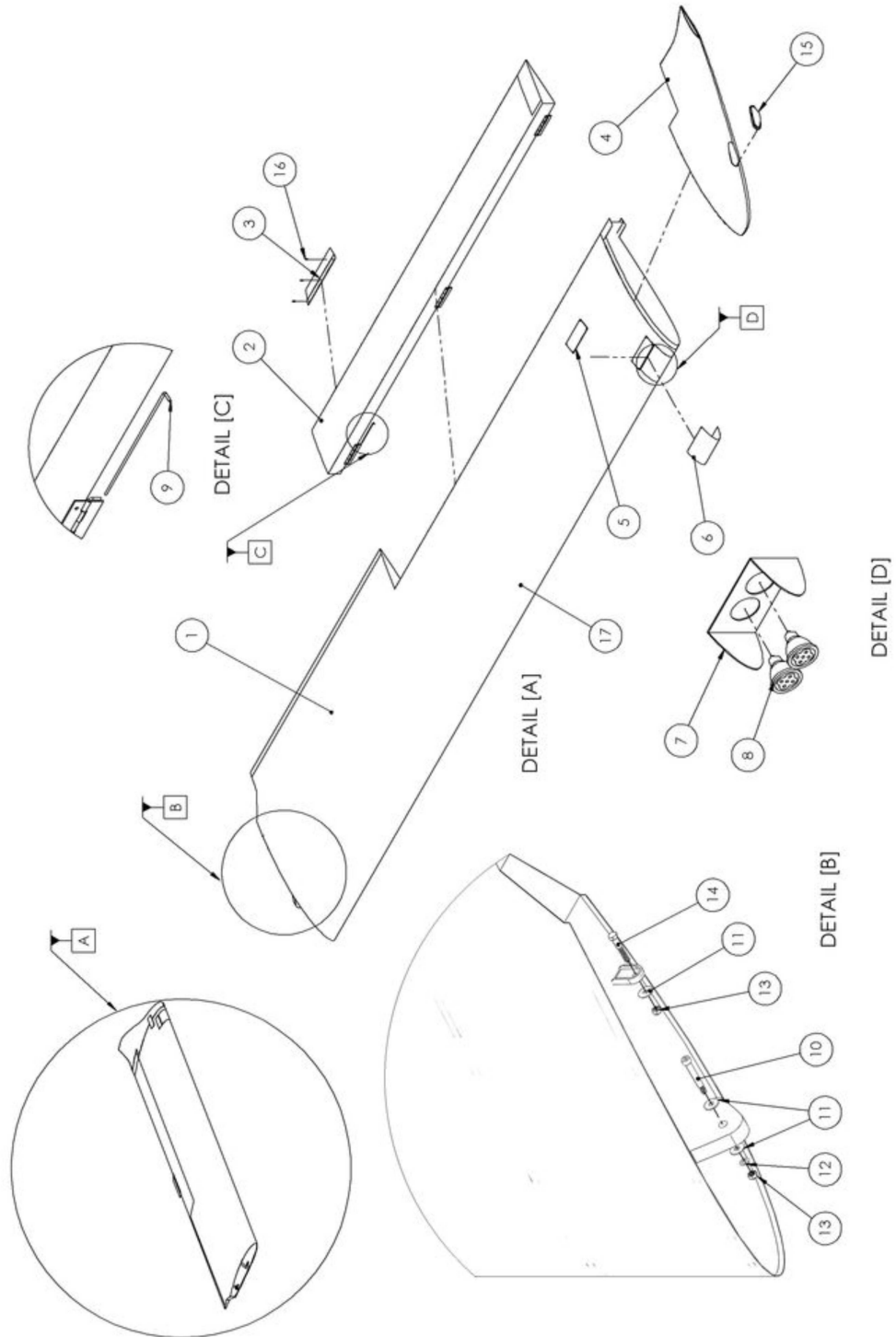


ASSEMBLY-03LS - UPPER WINGS

FIGURE N° N° FIGURA	PART NUMBER CÓDIGO PEÇA	NOMENCLATURE / DESCRIPTION NOMENCLATURA / DESCRIÇÃO	QUANTITY PER SET QTDE. POR CONJUNTO	MEASURE UNIT UNID. DE MEDIDA
01	SE-133.002-1	LEFT WING	1	PC
(01)	SE-133.062-1	RIGHT UPPER WING ASSY	1	PC
02	SE-133.131	LEFT AILERON	1	PC
(02)	SE-133.130	RIGHT AILERON	1	PC
03	SE-123.080	TAB	1	PC
04	SE-133.034	LEFT WINGLET	1	PC
(04)	SE-133.035	RIGHT WINGLET	1	PC
05	PE-133.503	INSPECTION WINDOW	1	PC
06	SE-133.010	LANDING LIGHTS GLASS	1	PC
07	SE-133.054	LIGHTS SUPPORT	1	PC
08	DY-510.022	LANDING LIGHTS	2	PC
09	MP-900.325	HINGE PIN	0,14	MT
10	SE-133.047	BOLT	1	PC
11	DIN 9021 A2 M8	FENDER WASHER	2	PC
12	DIN 125 A2 M8	FLAT WASHER	4	PC
13	DIN 985 A2 M8	LOCK NUT	2	PC
14	DIN 931 A2 M8X50	BOLT	1	PC
15	PB-510.062-2	RED STROBE LIGHT	1	PC
(15)	PB-510.058-2	GREEN STROBE LIGHT	1	PC
16	PN-705.017	RIVET	3	PC
17	MP-900.173	DACRON FABRIC COVERING 1.8 OZ	7,95	MT

ASSEMBLY-03LS - UPPER WINGS



Alpha Numeric Parts List Lista de Peças Alfanumérico

PART NUMBER CÓDIGO PEÇA	ASSEMBLY CONJUNTO	PAGE N° N° PÁGINA	FIGURE N° N° FIGURA
DIN 125 A2 M8	ASSEMBLY-03LS	1	12
DIN 9021 A2 M8	ASSEMBLY-03LS	1	11
DIN 931 A2 M8X50	ASSEMBLY-03LS	1	14
DIN 985 A2 M8	ASSEMBLY-03LS	1	13
DY-510.022	ASSEMBLY-03LS	1	08
MP-900.173	ASSEMBLY-03LS	1	17
MP-900.325	ASSEMBLY-03LS	1	09
PB-510.058-2	ASSEMBLY-03LS	1	(15)
PB-510.062-2	ASSEMBLY-03LS	1	15
PE-133.503	ASSEMBLY-03LS	1	05
PN-705.017	ASSEMBLY-03LS	1	16
SE-123.080	ASSEMBLY-03LS	1	03
SE-133.002-1	ASSEMBLY-03LS	1	01
SE-133.010	ASSEMBLY-03LS	1	06
SE-133.034	ASSEMBLY-03LS	1	04
SE-133.035	ASSEMBLY-03LS	1	(04)
SE-133.047	ASSEMBLY-03LS	1	10
SE-133.054	ASSEMBLY-03LS	1	07
SE-133.062-1	ASSEMBLY-03LS	1	(01)
SE-133.130	ASSEMBLY-03LS	1	(02)
SE-133.131	ASSEMBLY-03LS	1	02