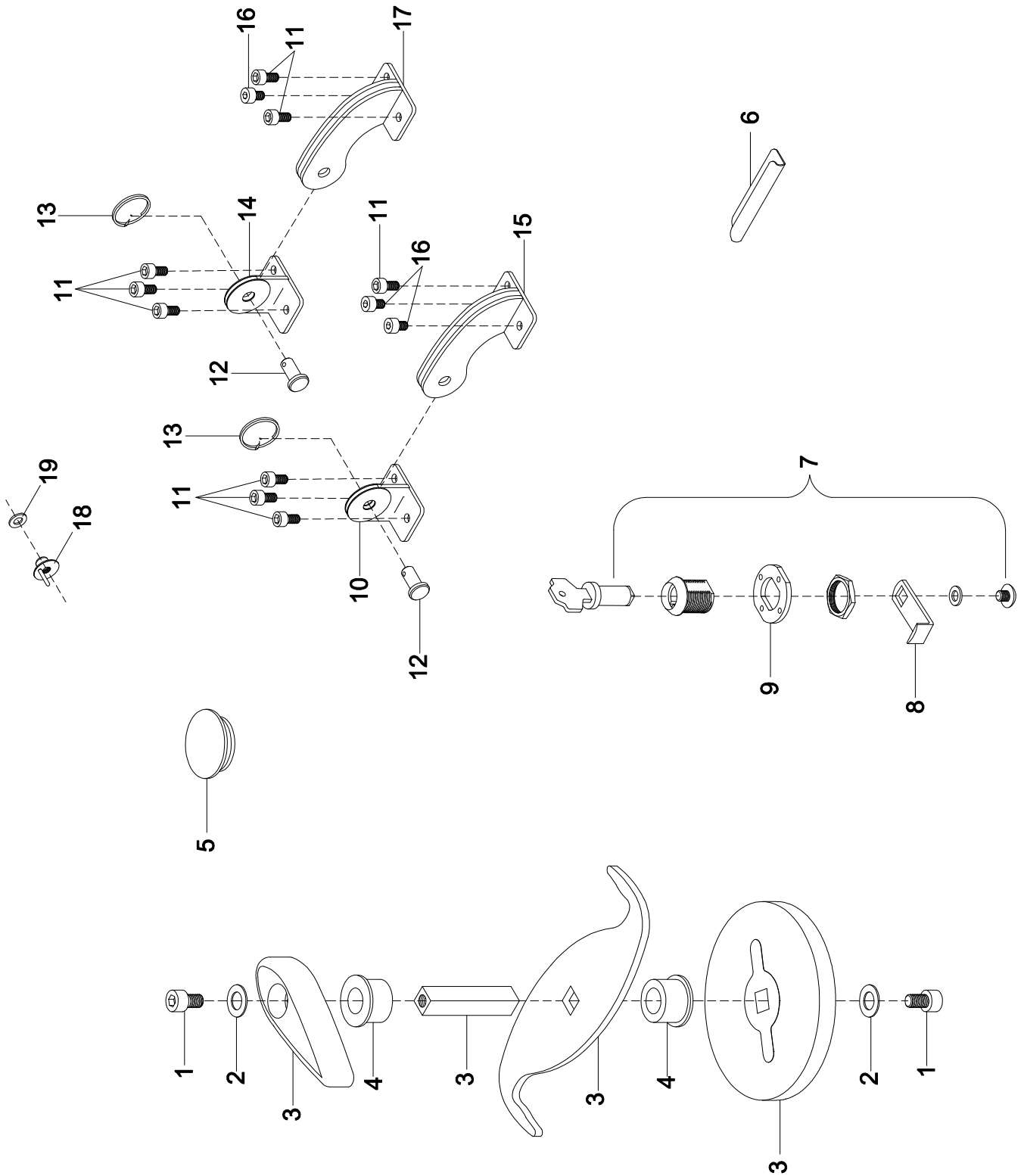


ASSEMBLY-02LS - CANOPY HARDWARE LS

FIGURE Nº Nº FIGURA	PART NUMBER CÓDIGO PEÇA	NOMENCLATURE / DESCRIPTION NOMENCLATURA / DESCRIÇÃO	QUANTITY PER SET QTDE. POR CONJUNTO	MEASURE UNIT UNID. DE MEDIDA
001	PN-701.088	SS HEAD ALLEN BOLT M6X10	2	PC
002	PN-703.004	FLAT WASHER 8MM	2	PC
003	SE-114.069	CANOPY LATCH KIT	1	PC
004	SE-114.049-1	CANOPY LATCH ARTICULATION BUSHING	2	PC
005	SE-114.008	LOCK HOLE FINISHING CAP	1	PC
006	SE-114.047	LATCH FINISHING PLATE	2	PC
007	SI-114.001	LIGHTWEIGHT DOOR LOCK SET	1	PC
008	SE-114.007-1	CANOPY LATCH LOCK TAB	1	PC
009	SE-114.009	LOCK CAP PLATE	1	PC
010	SE-114.026-2	FUSELAGE UPPER LEFT/ LOWER RIGHT HINGE	2	PC
011	PN-701.084	ALLEN SCREW SS M4X8	18	PC
012	PE-122.020	PIN DIA 6 X 13	4	PC
013	PN-704.010	CIRCLE COTTER PIN	4	PC
014	SE-114.027-2	FUSELAGE UPPER RIGHT/LOWER LEFT HINGE	2	PC
015	SE-114.017-3	DOOR, LH LOWER HINGE	1 (A)	PC
016	PN-701.091	HEX SOCKET HEAD CAP SCREW M4X6	6	PC
017	SE-114.019-3	DOOR, LH UPPER HINGE	1 (B)	PC
018	SE-114.043	BUSHING, LOCK LATCH W/ PIN	2	PC
019	PN-703.001	FLAT WASHER 4MM	2	PC

ASSEMBLY-02LS - CANOPY HARDWARE LS



ASSEMBLY-02LS - CANOPY HARDWARE LS

- (A) PARA O LADO DIREITO, CÓDIGO SE-114.016-3 - DOBRADIÇA INFERIOR DIREITA NA PORTA
TO THE RIGHT SIDE, P/N SE-114.016-3 - DOOR, RH LOWER HINGE

- (B) PARA O LADO DIREITO, CÓDIGO SE-114.018-3 - DOBRADIÇA SUPERIOR DIREITA NA PORTA
TO THE RIGHT SIDE, P/N SE-114.018-3 - DOOR, RH UPPER HINGE

Alpha Numeric Parts List
Lista de Peças Alfanumérico

PART NUMBER CÓDIGO PEÇA	ASSEMBLY CONJUNTO	PAGE N° N° PÁGINA	FIGURE N° N° FIGURA
PE-122.020	ASSEMBLY-02LS	1	012
PN-701.084	ASSEMBLY-02LS	1	011
PN-701.088	ASSEMBLY-02LS	1	001
PN-701.091	ASSEMBLY-02LS	1	016
PN-703.001	ASSEMBLY-02LS	1	019
PN-703.004	ASSEMBLY-02LS	1	002
PN-704.010	ASSEMBLY-02LS	1	013
SE-114.007-1	ASSEMBLY-02LS	1	008
SE-114.008	ASSEMBLY-02LS	1	005
SE-114.009	ASSEMBLY-02LS	1	009
SE-114.017-3	ASSEMBLY-02LS	1	015
SE-114.019-3	ASSEMBLY-02LS	1	017
SE-114.026-2	ASSEMBLY-02LS	1	010
SE-114.027-2	ASSEMBLY-02LS	1	014
SE-114.043	ASSEMBLY-02LS	1	018
SE-114.047	ASSEMBLY-02LS	1	006
SE-114.049-1	ASSEMBLY-02LS	1	004
SE-114.069	ASSEMBLY-02LS	1	003
SI-114.001	ASSEMBLY-02LS	1	007